

# **WIRELESS PRODUCTION NOTIFICATION SYSTEM**

**Controler MMSL-11**  
**+ signal light MMSL-3BT**



**Intuitive operation - no special training necessary.**

**Possibility to adapt the functions to the company's requirements.**

**Wireless data transmission.**

**Reporting deficiencies and their causes.**

**Reporting of production events.**

**Statistics of shortages and production events.**

**Installation without structured cabling.**

## OPERATOR PANEL WITH SIGNAL LIGHT

### MMSL-11

| Type                       | Operator panel                                |
|----------------------------|---|
| Screen, size               | Touch 7 inches                                |
| Protection housing         | Strong armored case with screen protection    |
| Mounting to the ground     | Mounting holes, Velcro, zip ties              |
| Data transmission          | WiFi 2,4GHz                                   |
| Transmission option by LTE | Model: MMSL-11LTE                             |
| Power supply, backup power | 230/12V USB-C power adapter, internal battery |

The operator panel is mounted on the machine and is fully connected to the MoldMaker system via WiFi.

It allows you to report production events such as production shortages, call foreman, lack of raw material, failure reporting or other. Events are recorded and can automatically trigger a service order for the Maintenance Department.

The 3-color signal column shows the current status of the working tool.

**Green colour – status OK**

**Yellow colour – event reporting**

**Red colour – status NOK**

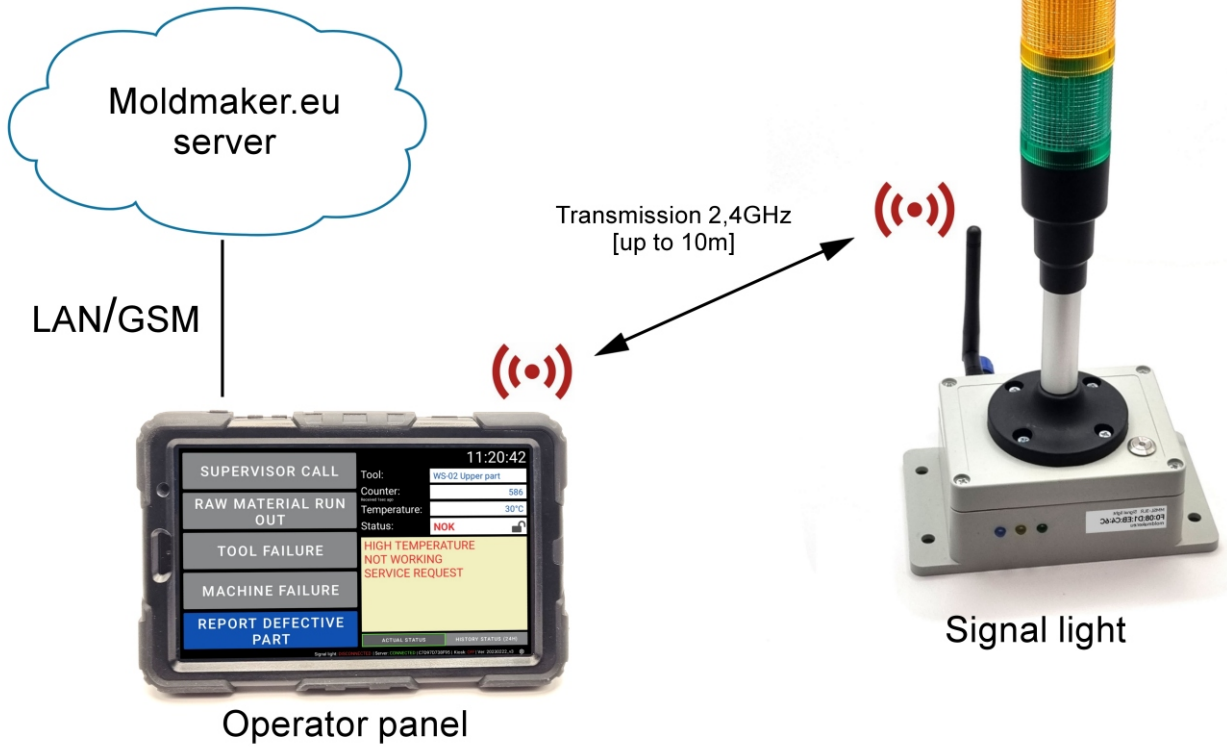
### MMSL-3BT

| Type                | Signal column          |
|---------------------|------------------------|
| Number of colors    | 3                      |
| Sound signal        | No / Yes (option)      |
| Power               | Power adapter 230V/24V |
| Transmission, range | 2,4 Ghz, up to 10m     |
| Working temperature | -20°C ÷ +85°C          |





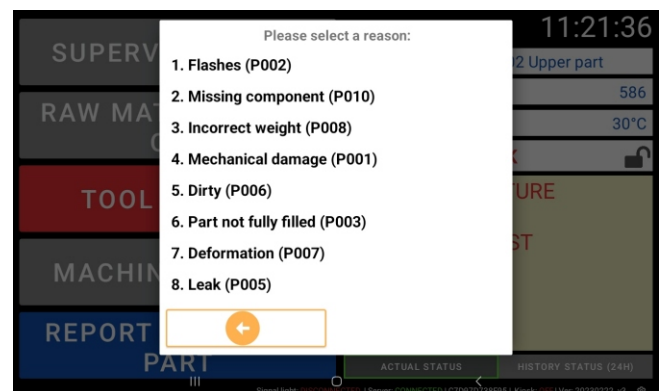
# OPERATOR PANEL WITH SIGNAL LIGHT



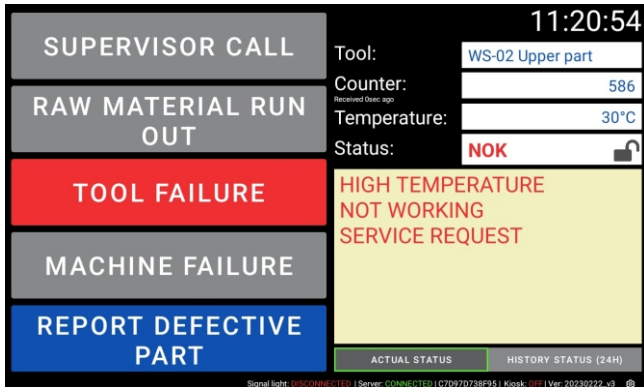
The lamp visualizes the current status of the tool in the system

## FUNCTIONALITIES

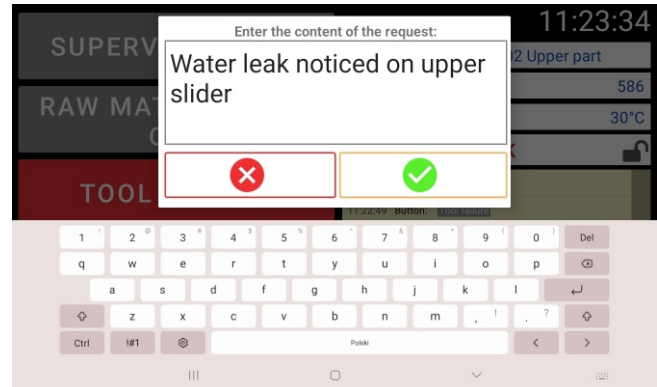
- 4 function buttons that can be freely labeled, e.g. call foreman, reporting a lack of raw material, reporting a failure, etc.
- each of the buttons can automatically activate a Service Request for people working in the Maintenance Department and send e-mail notifications. They should take service action when they see a new service request.
- 1 button to report production shortages with quantity and reason. The list of possible reasons is defined by each company for itself. Rich statistics of shortages are available.
- The 3-color Signal Lamp visualizes the working status of the tool marked **OK/NOK**. According to this status, the green or red lamp lights up. Actions to which the lamp reacts are defined in the system. For example, the red color may light up when the tool maintenance schedule has reached the set time.
- Calling the operator to the manager's room. The manager can call the operator with one button on the screen. Information about the call will appear on the Panel, the yellow lamp will turn on and a sound signal will be heard .
- The panel displays current production data such as: tool name, counter status, temperature, button press history, etc.



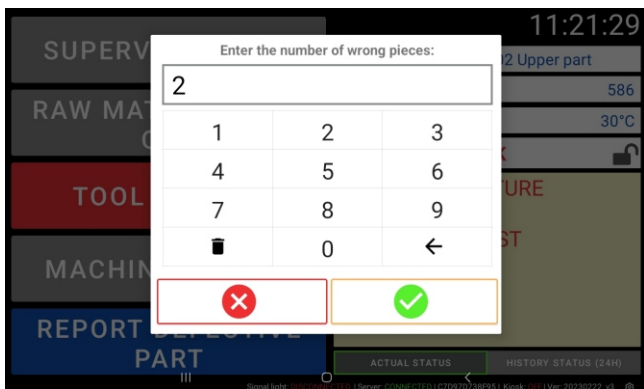
## EXAMPLES OF PANEL SCREENS AND ACTIONS



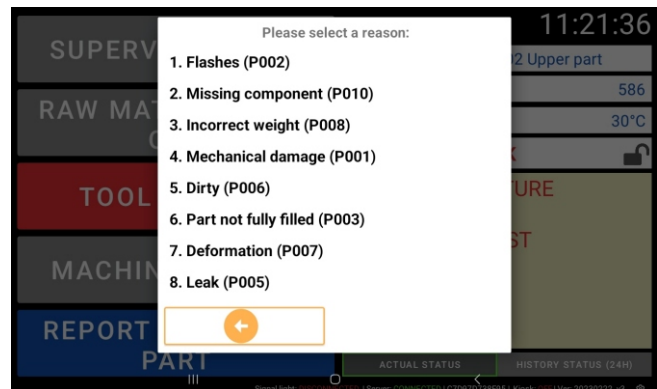
The operator pressed the “TOOL FAILURE” button.



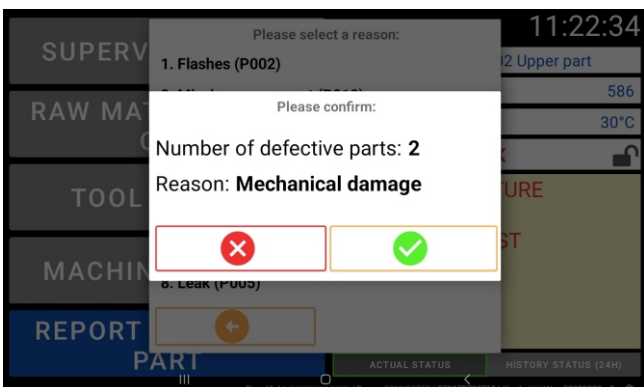
The system asks for a brief description of the failure.



The operator reported a production scrap. The system asks him to enter a quantity.



The system asks you to indicate the reason for the scrap.



Confirmation.  
2 scraps due to mechanical damage will be registered in the system.